

Acre * Mate Tillage Points

Cast knock on points with a difference

Sowing the way...



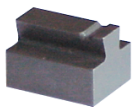
50mm Tungsten Wings 4" Penetration



Short Seeding Point 4" Penetration



Long Spear Point 6" Penetration



Heavy Duty



Standard

- * Tungsten is cast into the metal employing a unique process used exclusively by Mitchtip Acre* Mate.

- * A range of Austempered ductile iron points to suit various applications and conditions.
- * Will suit most machines with two bolt hole tyne.
- * The knock on shank provides the most positive fit in the market place today.
- * Up to 80mm of Tungsten cast into the leading edge.
- * Available in Heavy Duty and Standard.
- * Heavy Duty Tungsten 15mm X 8mm thick.
- * Standard Tungsten 10mm X 5mm thick.
- * Both Heavy Duty and Standard will provide long life in the most abrasive soils.
- * Winged points have 50mm Tungsten cast into the wings with an additional 30mm buffer for extra performance.
- * Selection of one of the two types - standard or heavy duty will depend on your soil type, personal experience with the product or by advice from your dealer.
- * If still in doubt, consult Mitchtip via one of the telephone numbers on this brochure.

We are only too happy to talk to you.

Acre* Mate Adaptors



- MTW001 44.5mm Hole Centres 1/2" Holes
 - MTW002 44.5mm Hole Centres 7/16" Holes
 - MTW003 57mm Hole Centres 1/2" Holes
 - MTW004 57mm Hole Centres 1/2" Holes to suit 50% Tyne*
 - MTW005 To suit Shearer Trash Worker 9/16" Holes
- *Allows fitting of all 47° angle knock on Slimline products.

Remember, the decision you make when setting up your machine is most important and can be extremely costly. The slimline type adaptor system provides you with the greatest amount of proven versatility. You will probably only ever require three different point sizes, and may have to use each one perhaps two to three times in a season for different applications. With the slimline adaptor on the leading edge of the tyne, you can then address the critical selection of a boot system from the wide range available.

- * Acre* Mate offers a range of five different slimline type adaptors to fit the most common machines and angles of tyne.
- * Adaptor system streamlines the preparation and sowing of crops. It offers the very best in crop preparation management.
- * By using this adaptor system, the operator can go from one size of point to another in around 20 minutes on a 50 tyne machine.
- * Time today is a most important factor. Points can readily be changed for application, further enhancing management procedures.

Go from this ...



... this in seconds with a hammer or air chisel

Why buy Acre * Mates?

- * Acre*Mates offer extended wear and ease of operation when compared to their competitors.
- * Acre*Mate's flow of trash is excellent.
- * Acre*Mates do not lock you into an expensive restrictive system.
- * Acre*Mates are competitively priced.
- * Acre*Mates stay on.
- * Acre*Mate's Tungsten is cast in, not soldered to outside. This reduces the risk of loss of Tungsten in stony ground.
- * Acre*Mate points are guaranteed against breakage*.
*Does not extend to Tungsten.
- * Acre*Mates are 100% Australian Made.
- * Full manufacturer and dealer support is only a telephone call away.

Points to remember when setting up and fitting the Acre * Mates

- * Make sure the adaptor is the correct fit for your machine. Consult your dealer if in doubt.
 - * Make sure adaptor is properly aligned and nut tension maintained.
 - * **ALWAYS WEAR PROTECTIVE GLASSES WHEN FITTING THE POINTS.**
 - * Ideally use an air chisel attachment to nip the point tightly to the adaptor.
- OR**
- * Knock points on by using a "drift" either beneath the top strike plate or on bottom side of shank.
 - * Do not hit the base of the point where the tungsten is located.
 - * When the points are fitted, put the machine into the ground and run it along for a few metres to nip them up.

SUPPLIER

REPRESENTATIVES

National ☐	Tony Mitchell ☐	0407 321 480
W.A. ☐	McCalls AgCentre ☐	(08) 9472 1888
S.A. ☐	Terry Durance ☐	0417 820 897
VIC. West. ☐	Tim Martin ☐	0429 836 229
N.S.W./QLD. ☐	Mathew Haseler ☐	0428 854 514
TAS. ☐	Peter Rial ☐	0418 300 796
☐	Michael Rial ☐	0429 637 715

Footnote *This brochure describes the Acre*Mate and its likely performance in a variety of soil types. Intending purchasers of Acre*Mates, wanting more information relating to expected performance, are invited to contact Mitchtip Agriculture PTY LTD.



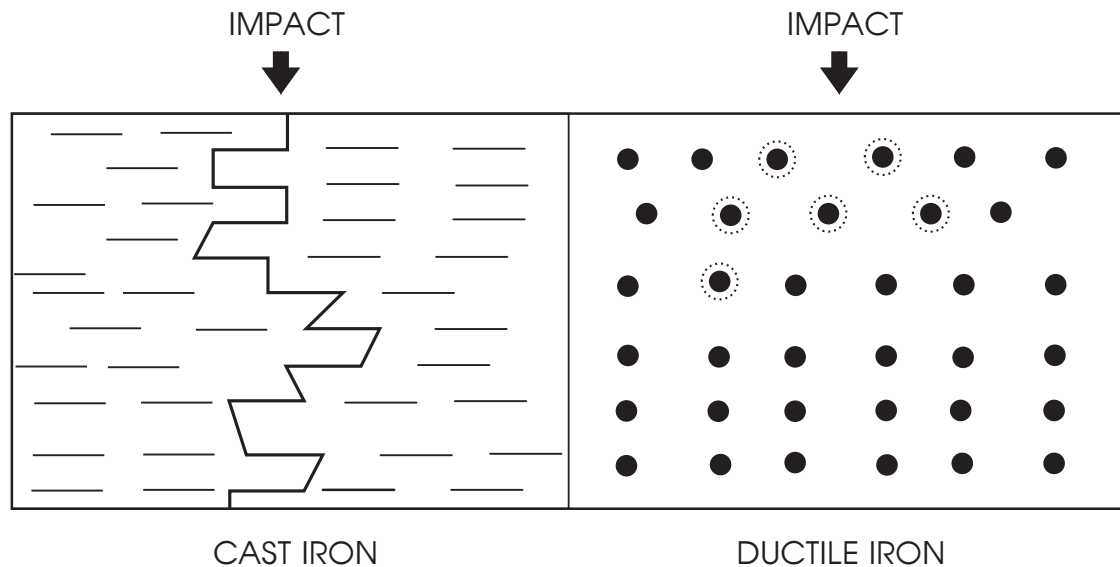
✓ AUSTRALIAN DESIGNED
✓ AUSTRALIAN DEVELOPED
✓ AUSTRALIAN MADE

Mitchtip Agriculture PTY LTD ACN 072 424 616



Box 565, Port Melbourne
Victoria, 3207 Australia
Mobile: 0407 321 480
Ph/Fax: (03) 9645 2464

Acre * Mate Mitchtip Material



* CAST IRON

Has graphite in platelet form. When impacted the platelets have the capacity to readily link up. This results in cracking. In effect the material is brittle.

* DUCTILE IRON, NODULAR IRON, SPHEROIDAL GRAPHITE

Is cast iron with a difference. The graphite is in Nodular or Spheroid form. When impacted the shock waves localise around the Spheroids of graphite, consequently there is not the ready capacity for the material to crack.

Acre * Mate are made from Ductile Iron, they are then Austempered or A.D.I.'D a form of heat treatment which gives ductile iron the integrity of steel.

A.D.I. (Austempered Ductile Iron) has more wear resistance than steel of higher hardness level.



Mitchtip Agriculture PTY LTD ACN 072 424 616



Box 565, Port Melbourne
Victoria, 3207 Australia
Mobile: 0407 321 480
Ph/Fax: (03) 9645 2464